



BAY & BOW

INSTALLATION INSTRUCTION

VERSION 7.20.21



TRIMLINEWINDOWS.COM

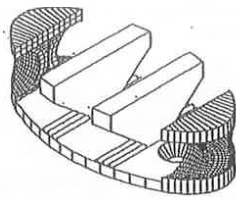
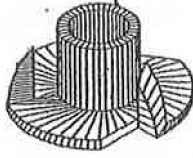
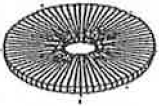
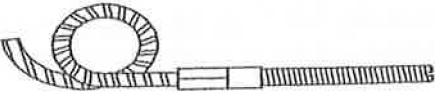
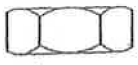
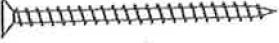
NOTICE

1. ALL BAY/BOW WINDOWS MUST BE COVERED FROM WEATHERING BY A ROOF OR OVERHANGING. THE HEADBOARD IS NOT A ROOF.
2. TO ENHANCE THE BEAUTY AND PROTECT THE DURABILITY OF THE QUALITY VENEER USED ON THE WINDOW UNIT, WE STRONGLY RECOMMEND THIS PRODUCT SHOULD BE TREATED WITH A WOOD PRESERVATIVE, VARNISH, POLYUREATHANE OR HIGH QUALITY OIL-BASE PAINT WITHIN 48 HOURS OF INSTALLATION. FAILURE TO DO SO WILL VOID ANY WARRANTY EXPRESSED OR IMPLIED.
3. FOLLOW THE ENCLOSED INSTRUCTION STEP BY STEP, WHICH WILL FACILITATE THE WHOLE PROCEDURE.



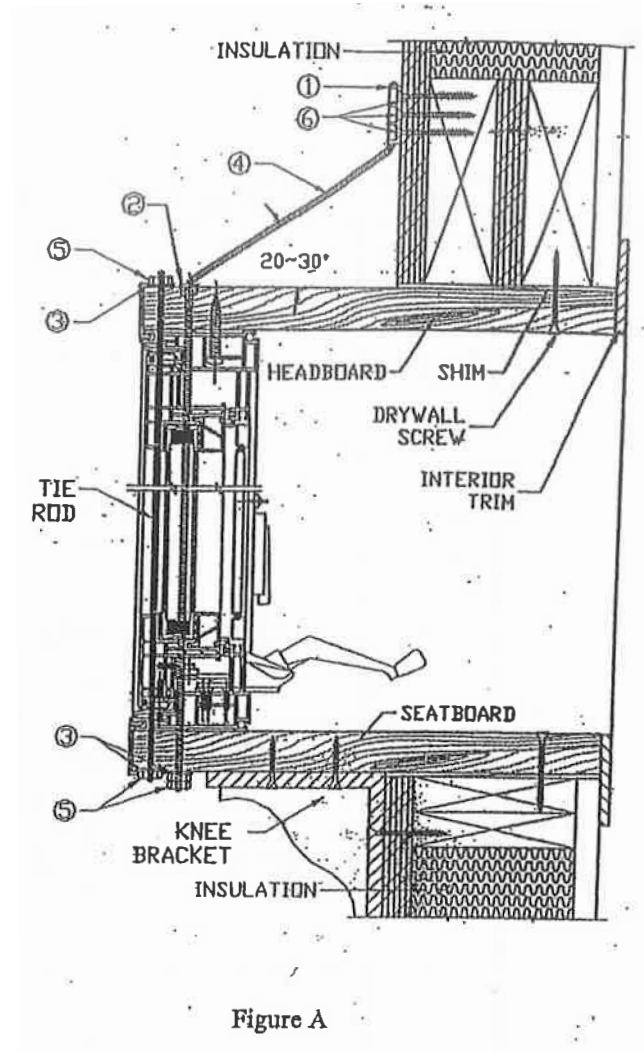
TRIMLINE

WINDOWS & DOORS

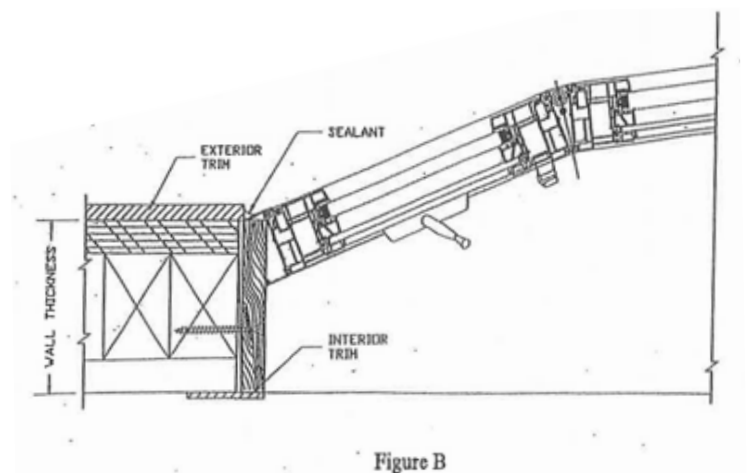
NO.	DESCRIPTION	PART NO.	QUANTITY	
1	CABLE CLEAT	A38-X001	2	
2	T-NUT	A39-X001	2	
3	WASHER-1/4"	P62-X002	4	
4	STEEL CABLW-9'3"	P67-001	2	
5	HEX NUT-1/4"	HN1/4-28	4	
6	SCREW FOR CLEAT	10x2-1/2	6	

UNIT INSTALLATION

1. Pre-drill and countersink the head, seat, and sideboards of the Bay/Bow unit by spacing every 16-18 inches apart. Approximately 1 ¾ inches away from the inside edge of the wood.
2. Center the unit. You may use a temporary support to help holding the weight.
3. Bring the inside edge even with the inside wall surface of the house.
4. Shim the unit behind each installation hole.
5. Drive a 3" drywall screw in each hole.
6. You may attach knee brackets to the house.
7. With the exterior trim in place, caulk the exterior perimeter where it meets the rough opening.
8. Install interior trim to cover the edge of the head, seat, and the sideboards.



See Figure A for head and seat detail and Figure B for the side board detail.



CABLE INSTALLATION

1. Locate the cable cleats (1) in reference to the "T" nuts (2) dimension from the exterior sheathing line.
2. Be aware that the angle between the cable (4) and the headboard should be within 20-30 degrees. (Figure A)
3. In addition, both cables (4) should also tilt in toward the center of the unit with a minimum of 15 degrees. The suggested angle is within 20-30 degrees. (Figure B)
4. Anchor the cable cleats (1) with the 2" wood screw. (6)
5. Wrap the cable (4) around the cable cleat (1) as shown on Figure B.
6. Stable or nail the cable tail to secure it. (Figure B)
7. Fasten the adjustable screws (5) on the bottom of the unit to tighten the desired setting. (Figure A)

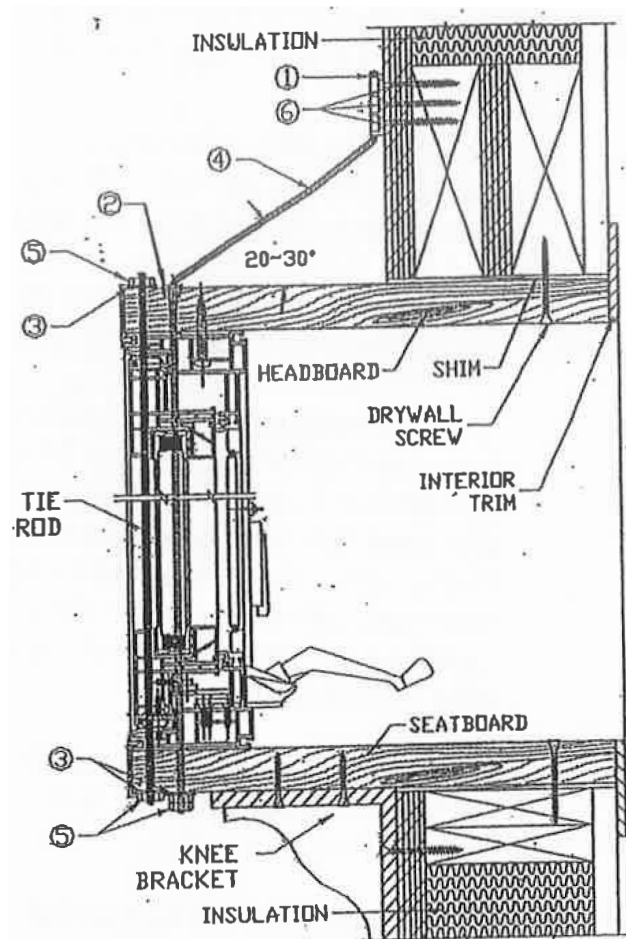


Figure A

See Figure C for the location of cables.

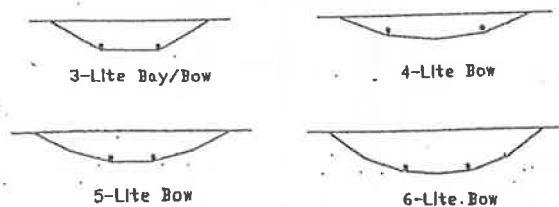


Figure C

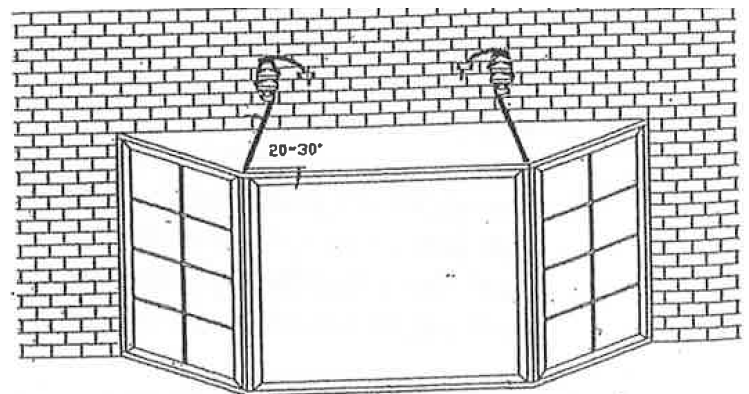


Figure B

SELF-ASSEMBLED ROOF INSTALLATION

1. Mark off the outline where the roof will fit against the siding. The top of the roof should come to the bottom of a row of shingles.
2. Set your circle saw to the depth of the siding and cut along the lines. Remove the siding.
3. From the inside point of the cutout, measure down the distance equivalent to the thickness of your sheathing plus an additional $\frac{1}{2}$ " allowance for your flashing and shingles. Snap a line at this point across the top and down each side of the cut out. These lines should be used as a reference to the top most point of your rafters.
4. Cut the ledger plate to correct size by using the lines as a guide. Mount it to the house and fasten it into studs.
5. Miter cut the rafter and fit them into place. The rafters should be spaced every 16". Mount the rafters in place by toe nailing them to the ledger plate and headboard.
6. Miter cut your hip rafter and toe nail them into your pre-mounted rafters from step 5. A hip rafter must be mounted to the house on each side of the roof.
7. Cut and mount your sheathing blocks to the headboard. Place a layer of fiberglass insulation across the tip of the unit. Nail your sheathing to the rafters and sheathing blocks.
8. Nail and drip edge around the base of the roof and cover the roof with shingles and flashing.
9. Apply sealant along the gap between the siding and strip flashing.

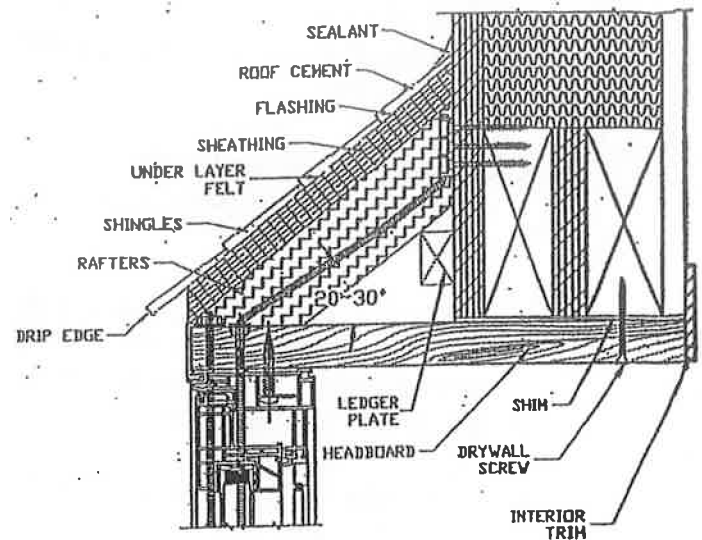


Figure A

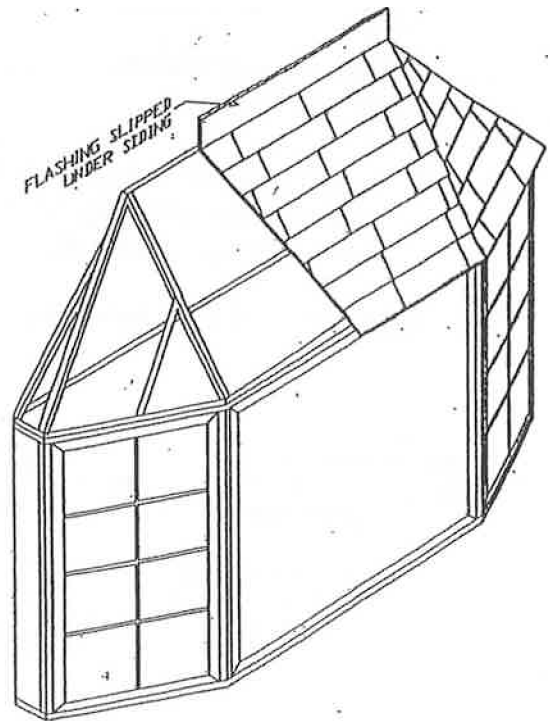


Figure B

FACTORY- BUILD ROOF INSTALLATION

1. Fill the hollow center of the roof with fiberglass insulation.
2. Apply sealant on the backside of the roof, 1 inch below the edge; around the top and both sides of the cutout. Then center the roof on the top of the window.
3. Fasten 2" installation screws through each hole pre-drilled on the bottom edge of the roof into the headboard of the window.
4. Secure the top edge of the roof to the wall with screws through the pre-drilled holes.
5. Apply sealant around all the edges of the roof.

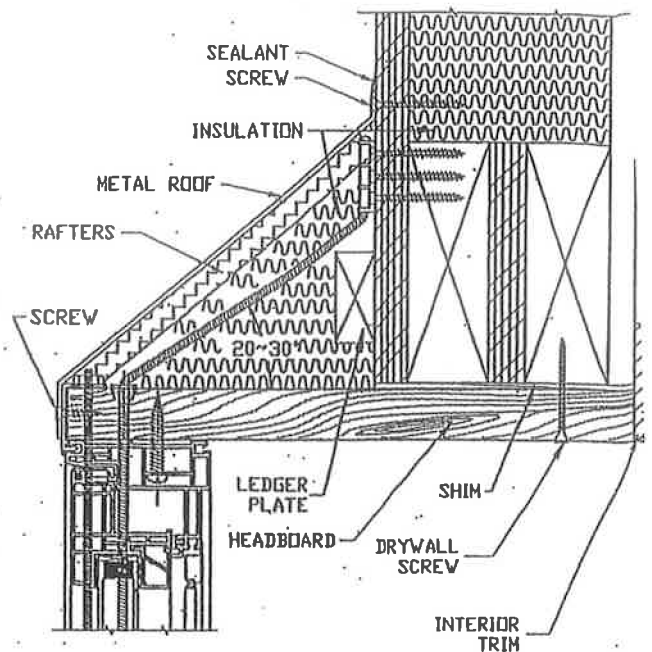


Figure A

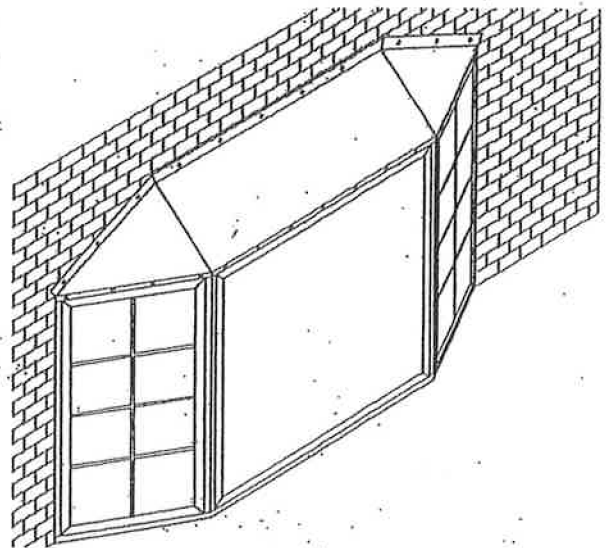


Figure B



50 Louise Drive Ivyland, PA 18974
Phone (215) 672-5233 • Fax (215) 674-9324
www.trimlinewindows.com

TRIMLINE WINDOWS INC

Reserves the right to make changes
in construction or design without
notifying holders of detail catalogs.